




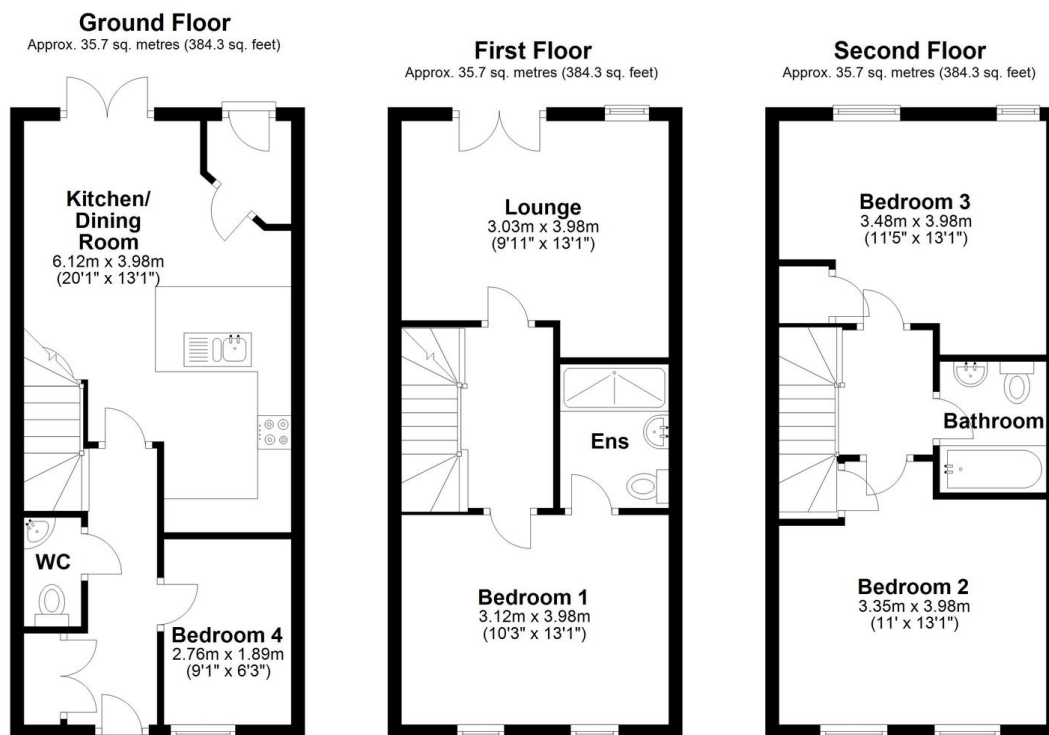
FFordd Pentre

£375,000

 4  3  2



- Beautifully presented four-bedroom waterfront townhouse in the Barry Waterfront development.
- Includes a private beautiful back garden, a cloakroom, and a flexible bedroom or study space.
- Ground floor features an open-plan kitchen/diner leading to a waterfront terrace.
- Easy access to Barry Island beach, shops, transport links, and the M4 for convenient commuting.
- Two dedicated parking spaces and close to local amenities, schools, and parks.
- Offers direct, breathtaking waterfront views, blending luxury with coastal charm.
- Spanning three spacious floors, with a versatile layout perfect for modern family living.
- First-floor living room offers bright, serene water views, ideal for relaxing.
- Master bedroom with a stylish ensuite for comfort and privacy.
- EPC rating B.



Total area: approx. 107.1 sq. metres (1153.0 sq. feet)

Welcome to this beautifully presented, four-bedroom waterfront townhouse, perfectly positioned within the highly sought-after Barry Waterfront development. Offering breath-taking, direct waterfront views, this home combines luxury living with coastal charm, making it a true gem in the area.